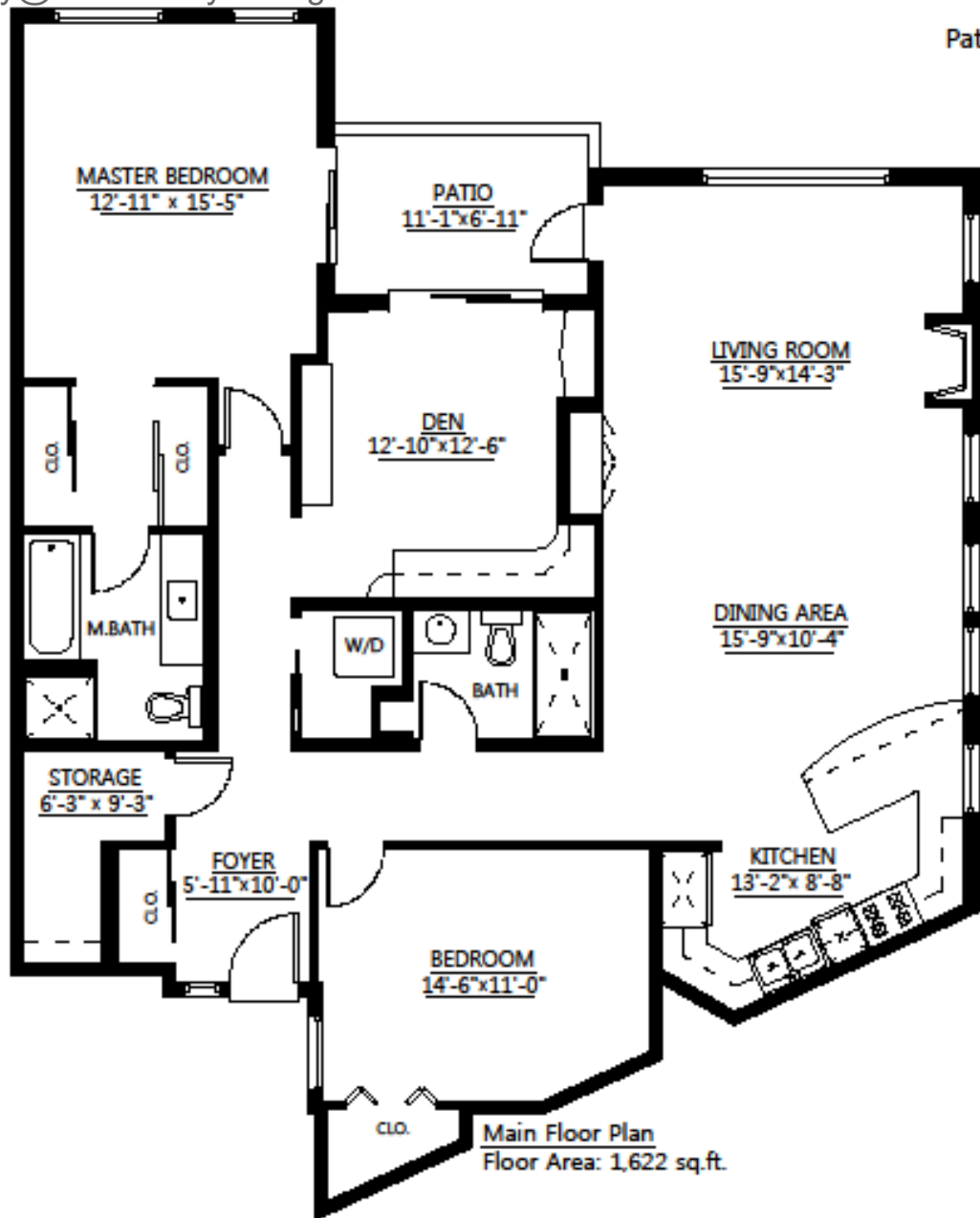




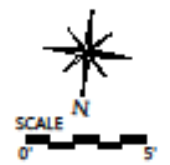
TEAM CINDYGERING

PERSONAL REAL ESTATE CORPORATION
604.779.1292 - Cindy@TeamCindyGering.com

**#112-3 Renaissance Sq
New Westminster, B.C.**
Main Floor: 1,622 sq.ft.
Patio: 84 sq.ft.



Main Floor Plan
Floor Area: 1,622 sq.ft.



ROYAL LEPAGE
West Real Estate Services

