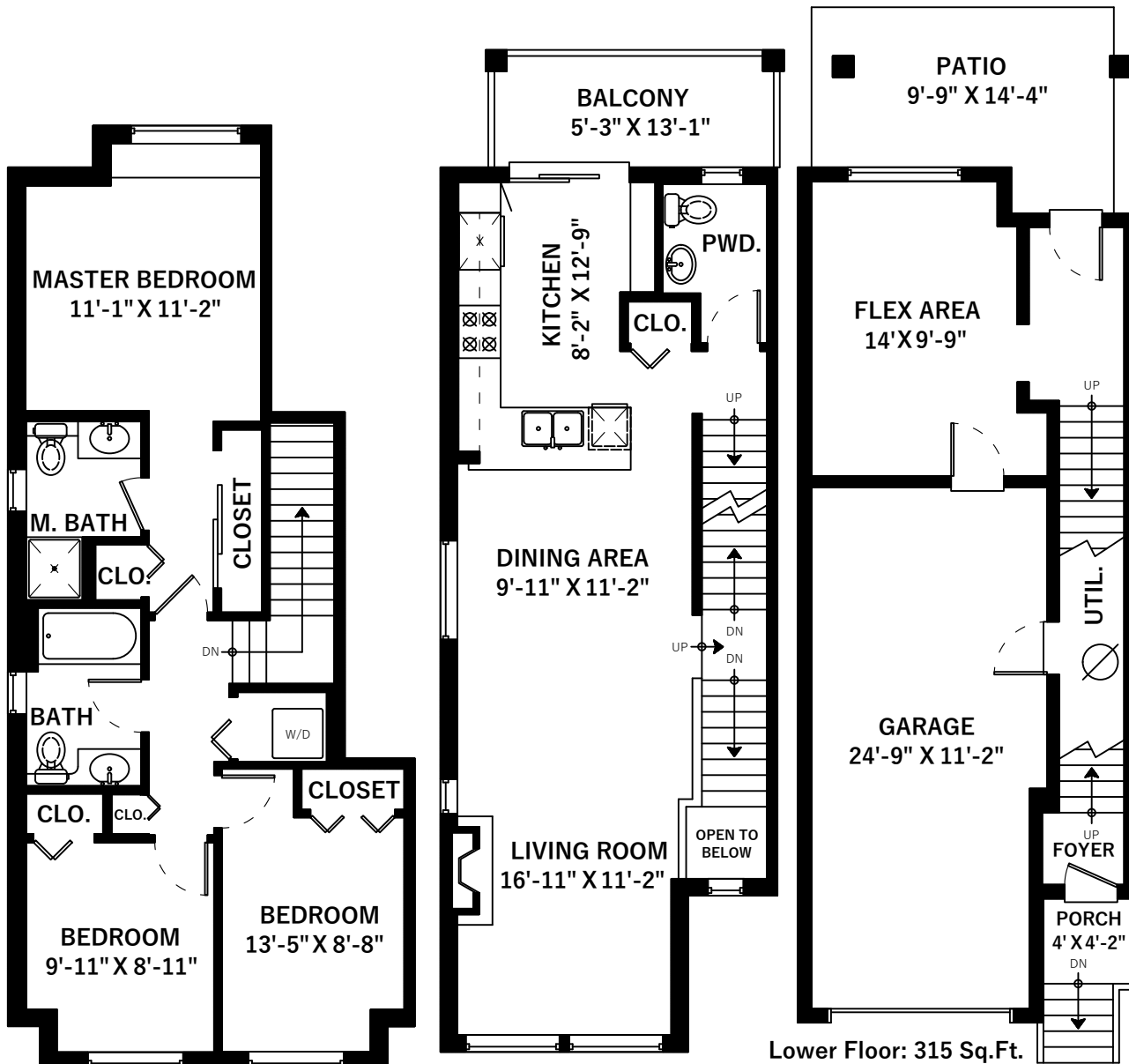


127-935 Ewen Ave  
New Westminster, BC



Upper Floor: 703 Sq.Ft.  
Ceiling Height: 8'

Main Floor: 621 Sq.Ft.  
Ceiling Height: 9'

Lower Floor: 315 Sq.Ft.  
Ceiling Height: 8'

Main Floor	621 SQ.FT.
Upper Floor	703 SQ.FT.
Lower Floor	315 SQ.FT.*
<b>Total</b>	<b>1639 SQ.FT.</b>

\*unauthorized square footage included

Patio	119 SQ.FT.
Porch	18 SQ.FT.
Balcony	77 SQ.FT.
Garage	295 SQ.FT.
<b>Total Extras</b>	<b>509 SQ.FT.</b>

Open To Below 18 SQ.FT.

