

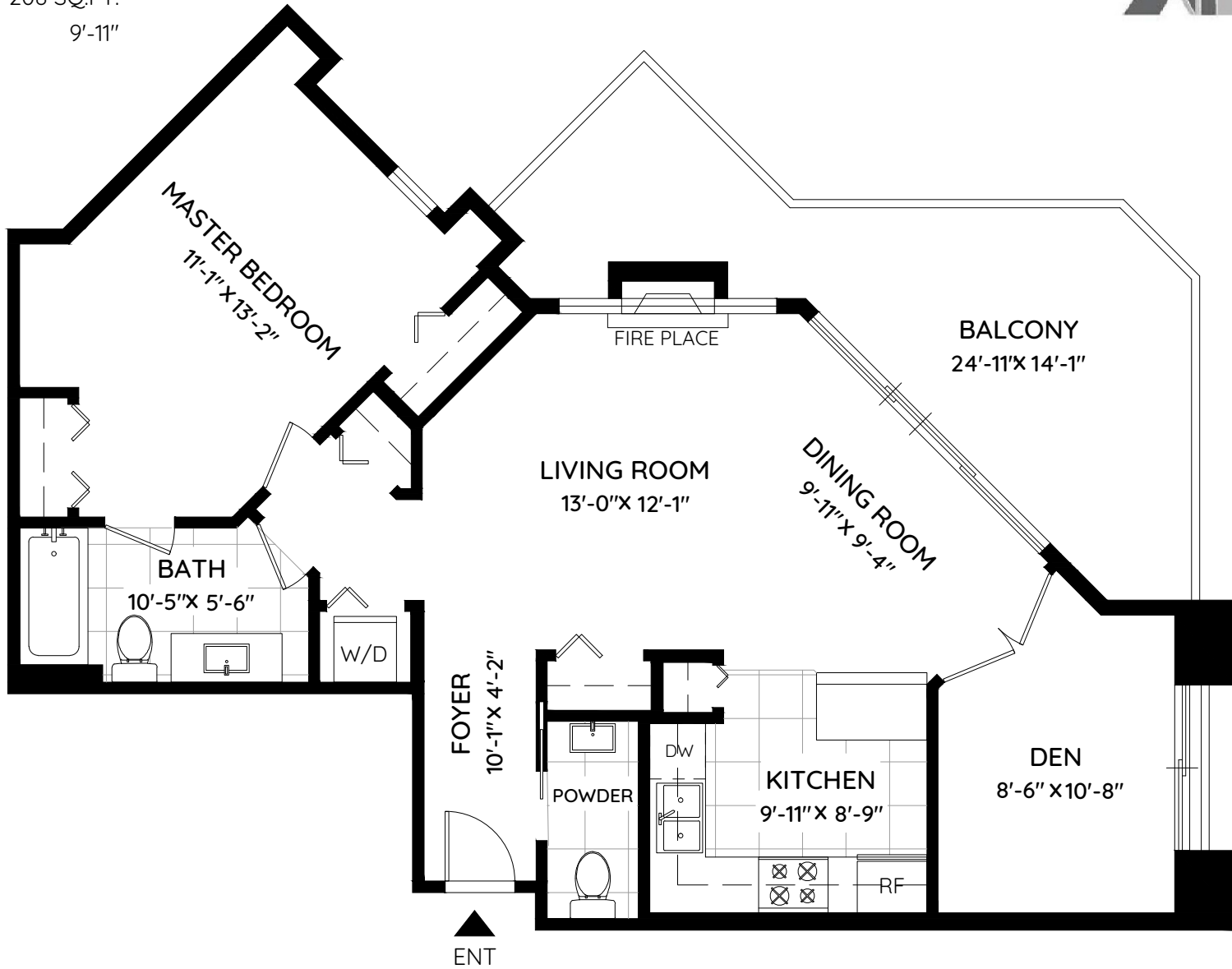
508 - 1128 6TH AVENUE

NEW WESTMINSTER, BC

LIVING AREA 844 SQ.FT.
BALCONY 208 SQ.FT.
CEILING HEIGHT 9'-11"

NEWWEST CONDO.COM

TEAM CINDYGERING
PERSONAL REAL ESTATE CORPORATION



0 ft 3 ft 5 ft



The floor plan and the measurements are approximate and are to be used for advertising usage only.
Not suitable for architectural or construction. E&O Insured

keyplan
plan your space