

YOUNG

REAL ESTATE GROUP

INFO@ALYOUNG.CA | 604.533.3491

#215-20259 Michaud Crescent,
Langley, B.C.

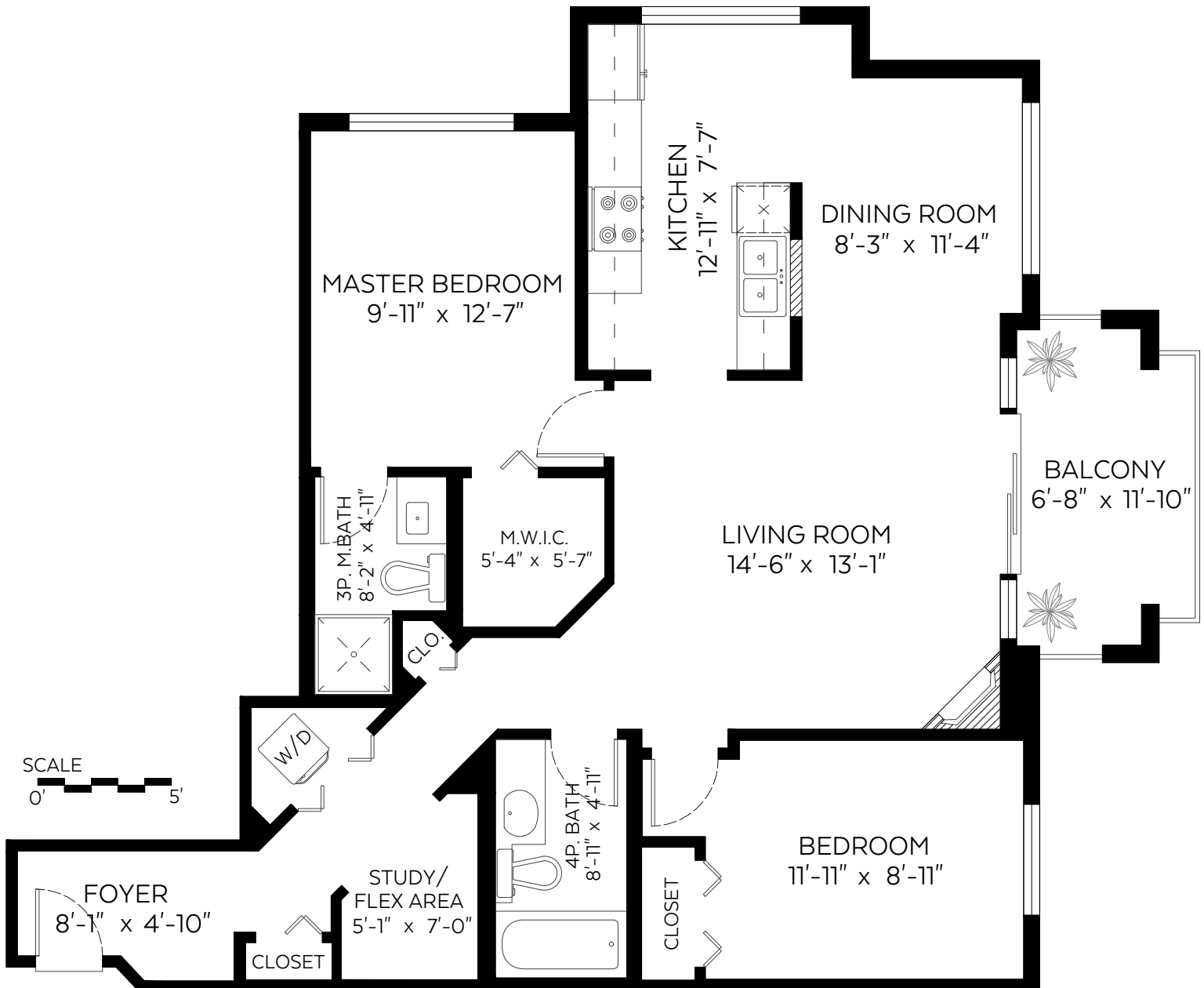
Main Floor:

1,025 sq.ft.

Auxiliary Area

Balcony:

76 sq.ft.



SCALE
0' 5'

Measured on: December 10, 2020

The floor plan is not suitable for architectural/construction and is covered under E&O. © Excelsior Measuring Inc. 2020. All rights reserved for Excelsior Measuring Inc. Users shall not publish and distribute such material (in whole or in part) and/or incorporate it in other works in any form.



NORTH

